

# NAC-2500<sup>®</sup>

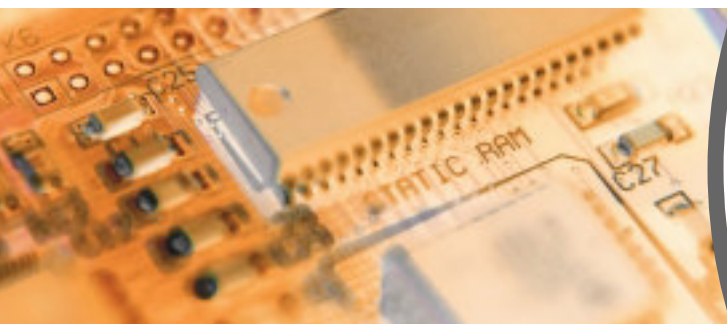
The NAC-2500 access controller provides speedy and efficient fingerprint authentication by incorporating the latest fingerprint recognition technology including optical sensor, and operating algorithms designed and developed solely by Nitgen, which provides customers with the opportunity to improve and upgrade existing systems, at reduced installation costs.

As an optional extra, the NAC-2500 is capable of utilizing our enterprise level entry/exit management system, whereby Administrators can assign controls to designate Managers, and so on. Employee work-time data can then be recorded utilizing the Time & Attendance management features with its built-in LAN communication based network structure. and enhanced server management program.



## ■ Special Features of the Product

- **Capable of supporting various communication protocols, it can be used in numerous application areas.**  
 TCI / IP: Compatible with access manager (option)  
 RS-485 : Functions with your company's existing controller Wiegand  
 - In : Functions with card readers currently in use  
 - Out : Provides various portions of formats, User ID or Card ID output
- **Suitable for employees' work hour management with the function keys provided**  
 Provides four separate keys / keys can be used in combination (starting work and finishing work, going out, returning to work, etc)
- **Enhanced user configuration feature (ID digits, sensor option, operation mode, etc)**
- **Enhanced User Convenience**  
 Auto-on  
 Provides Shortcut ID / Group Matching Feature  
 LCD : 2 line graphic LCD (supports various languages)  
 LED : Status LED 2 each, Authentication result LED 1 each  
 Voice Guide : Voice Output
- **Supports various authentication mode, making it possible to configure as required by different security methods.**  
 Fingerprint / Password / RF card (option:HID, MIFARE), combined use is possible



## ■ Access Controller Specifications

Item	Specifications	
Material	ABS	
Size	90 (W) * 205 (L) * 50 (H)	
Sensor	Type	Optical
	Resolution	500 [DPI]
Authentication	Mode	1:1, 1:N, Short ID matching
	Fact	Fingerprint, Password, RF card (HID, MIFARE compatible)
	Time	Less than 1 second
Operation Mode	SO	Stand-alone
	NS	Server matching
Environment	Temperature	-20 ~ 60 [°C]
	Power	12 / 24 [V]
Maximum number of registrations	2,000 Users (2 fingerprint per 1 user)	
Log	3,000 ea	
Authentication Rate	FRR : 1/1,000	FAR : 1/100,000
Function Key	F1 / F2 / F3 / F4	
Communication	TCP / IP, Wiegand Input / Output, RS-485	
Certification	MIC, CE, FCC	

# NAC-2500<sup>®</sup>

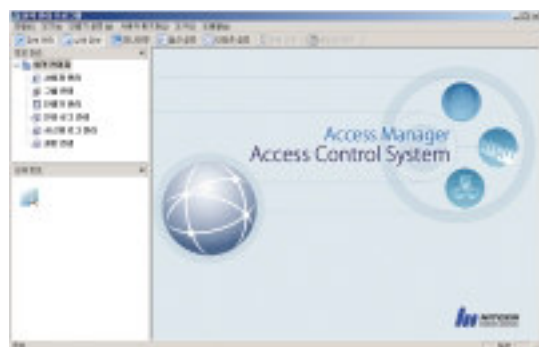
## Fingerprint Access Controller



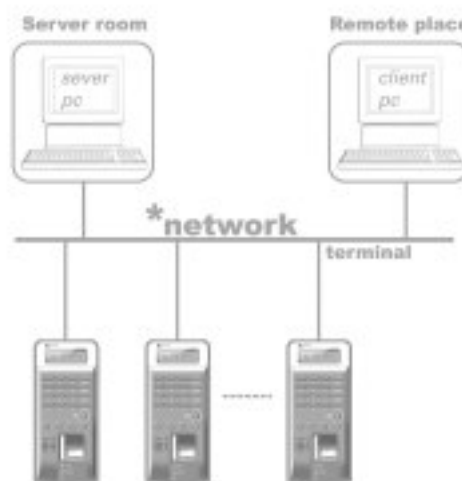
### AccessManager™ (Server Management Program)

The NAC-2500 operating program provides managers convenient, easy-to-use tools for the management and monitoring of all functions of this truly sophisticated security device. Up to 255 access controllers (terminals) can be installed and connected in a single network. User operations and verification can be via server for networked (multiple access controller) systems (NS), or directly at the access controller for single, stand-alone installations (SO).

In addition, the remote manager feature allows authorized managers at locations other than the main server location to register and track (monitor) users. The remote managers can also track users as they pass from location (controller) to location in real-time providing immediate, up to date whereabouts of users.



### System Structure



- **Terminal** : Terminal Access Control, Door control
- **Server PC** : Executes individual terminal communication, DB management, Remote Manager, Remote Monitor
- **Client PC** : Executes Remote Manager, Remote Monitor Operation
- **Others** : Fingerprint data / Encoded communication, Access restriction available per time and period, Auto-On



### Specifications

Product Name	Access Manager™
Components	Access Server / Remote manager / Remote monitor
Max Terminals	255 units / network
No. of Remote Clients	8 units
OS	Windows 98SE / 2000 / ME / XP / 2000 Server
Max User in DB	10,000 users (two fingerprints per individual user)



### Recommended Application

#### • Corporations

This is a multi-function system, capable of entry control, work hour management, and drinking water management.

#### • Apartment and Multi-Family Houses

This product can be installed in the common lobby as a security system. It can also give you an entry record log.

#### • Academies/Schools

This can be used for school administrative tasks, including entry control and student attendance records.

#### • Hotel and Leisure Facilities

You can use this product for customer management, in order to offer speedy and distinguished premium service to your customers..

#### • Financial Institutions / Research Centers Access Control



### Type of Options

No	Option	Category	Specs
1	Network module	Network module	Supports TCP/IP
2	Supports RF card	High frequency card reader	Supports MIFARE
		Low frequency card reader	Supports HID
3	Door Control	Door Control	